



10.11  
LIGHTING &  
SIGNAGE

- Preview Intelligent Cities Expo
- Van Heyningen and Haward Architects  
with Purcell Miller Tritton
- Jestico + Whites
- Mitchell Taylor Workshop
- Product directory
- RICS costs
- Lighting roundtable



# KING'S COLLEGE LIBRARY, TAUNTON, SOMERSET

MITCHELL TAYLOR WORKSHOP

## Selected products

**Linear lighting to library and behind shelves**  
 ETAP Kardo 90 Suspended Luminaires and ETAP (LED strip) surface-mounted LED luminaire  
[www.etaplighting.com](http://www.etaplighting.com)

**Classroom and stair core lighting**  
 Zumtobel Ecoos Suspended fluorescent and Zumtobel Solina High bay fluorescent luminaire  
[www.zumtobel.com](http://www.zumtobel.com)

**Metal signage**  
 Aller Engineering  
[www.allerengineering.com](http://www.allerengineering.com)

**Slate signage**  
 K Signs  
[www.k-signs.co.uk](http://www.k-signs.co.uk)

**Manifestations**  
 Co Signs  
[www.cosigns.co.uk](http://www.cosigns.co.uk)

**Brick**  
 Ibstock mixed palette  
[www.ibstock.com](http://www.ibstock.com)

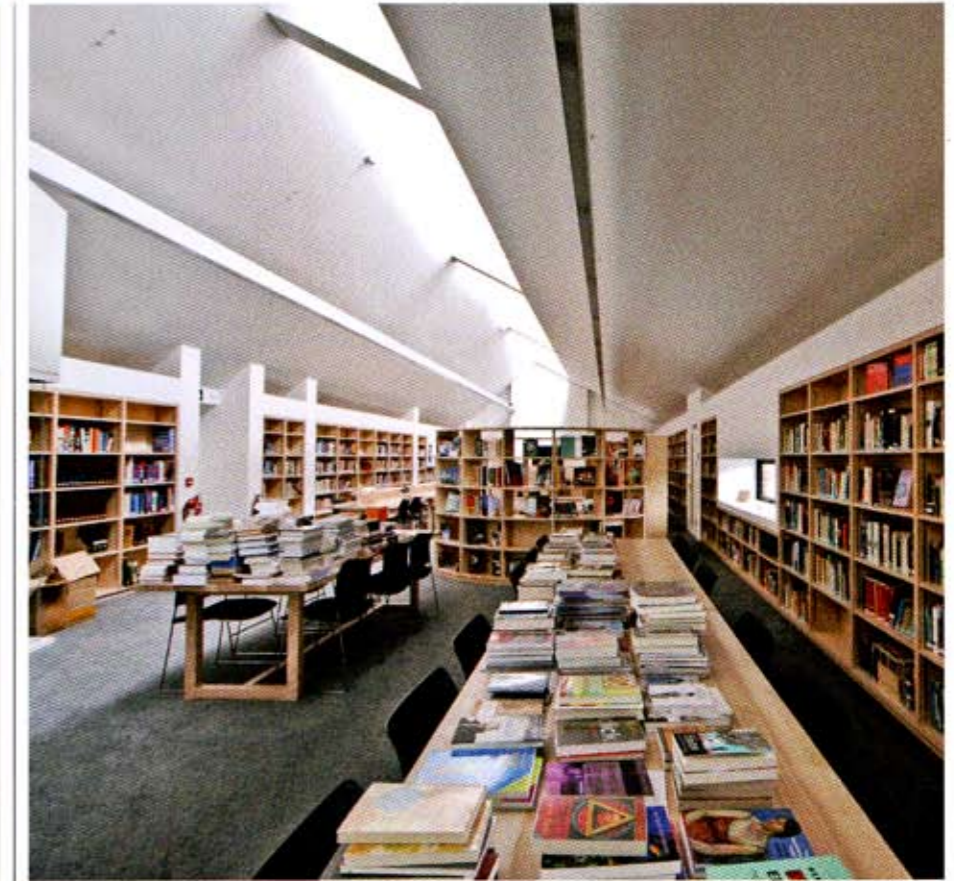
**Roofing**  
 VM Zinc pre-weathered Quartz-Zinc  
[www.v zinc.co.uk](http://www.v zinc.co.uk)

**Glazing and perforate vent panels**  
 SAPA Building Systems and Total Aluminium Systems  
[www.sapabuildingsystems.co.uk](http://www.sapabuildingsystems.co.uk)  
[www.total-aluminium.co.uk](http://www.total-aluminium.co.uk)

**Glass to bay windows**  
 Glazing Innovations  
[www.glazinginnovations.co.uk](http://www.glazinginnovations.co.uk)

**Rubber flooring**  
 Nora Plan Uni/1461  
[www.nora.com](http://www.nora.com)

**Carpet**  
 Miliken Collection, Textural, Cord B222 Charcoal  
[www.milliken地毯.com](http://www.milliken地毯.com)



## Project data

**Start on site date** March 2010  
**Contract duration** 48 weeks  
**Gross internal floor area** 620m<sup>2</sup>  
**Form of contract** JCT 2005 Intermediate  
**Total cost** £1.4 million  
**Cost per m<sup>2</sup>** £2,250  
**Client** The governors, King's College  
**Architect** Mitchell Taylor Workshop  
**Structural engineer** Hydrock Structures 1  
**M&E consultant** Buro Happold  
**Quantity surveyor** Peter Ballingall Associates/  
 Clark Associates  
**Main contractor** R G Spiller  
**CDM coordinator** Mitchell Taylor Workshop  
**Approved building inspector** Oculus Consultancy

**Clockwise from top left**  
 View looking north; main library; stair lobby; library looking west; view from north-east

The new library and classrooms at King's College, Taunton are the result of three years working closely with the school to develop a brief and then design a learning environment that meets the challenges of contemporary education. The design was born in part from a sustainability agenda that aimed to minimise the energy used to run the building with internal volumes that encourage stack effect natural ventilation, a super insulated shell and the use of natural recyclable materials. The 'witch's hat' shape of the roof presents rooflights to the north, introducing indirect daylight to the library and classrooms.

The challenge of working alongside mid-19th century Grade II listed buildings built of sandstone from long-exhausted quarries was met with the decision to use a mix of four bricks and a lime mortar that reflects the texture and character of the original stone walls.

**Piers Taylor**, director, Mitchell Taylor Workshop

PHOTOGRAPHY LIAM HOLCOMBE

**KING'S COLLEGE  
LIBRARY,  
TAUNTON,  
SOMERSET  
MITCHELL  
TAYLOR  
WORKSHOP**

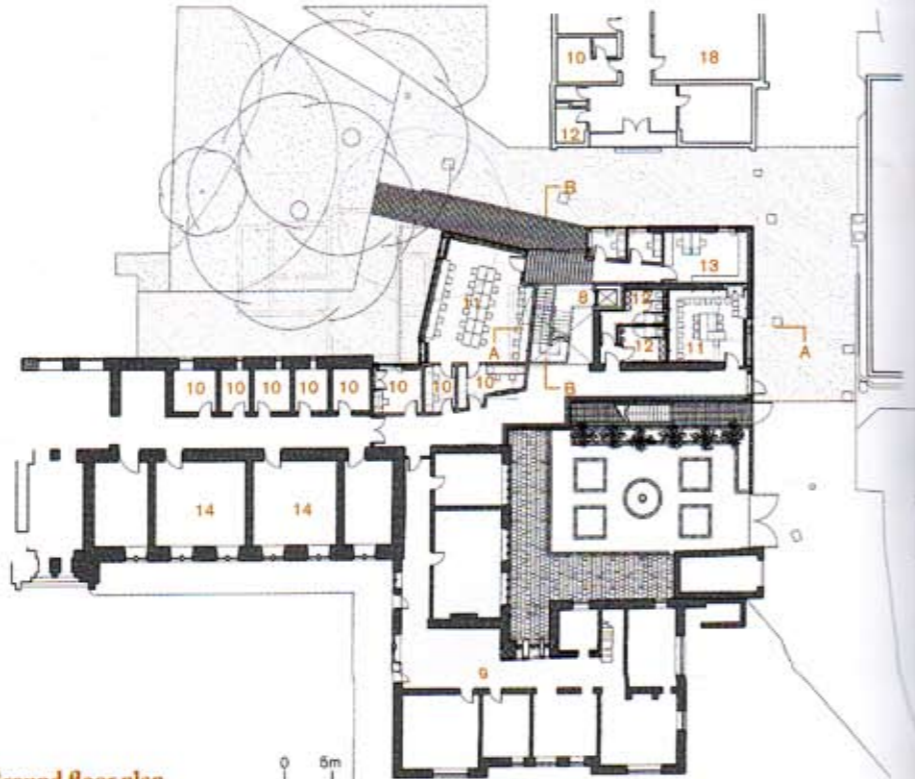


First floor plan

- |                       |                      |
|-----------------------|----------------------|
| 1. Chapel             | 11. ICT              |
| 2. King's College     | 12. WC               |
| 3. New library        | 13. Careers          |
| 4. Music school       | 14. Maths            |
| 5. Theatre            | 15. Library          |
| 6. Unmack building    | 16. Economics        |
| 7. Sports hall        | 17. Business studies |
| 8. Entrance           | 18. Geography        |
| 9. Headmaster's house | 19. New zinc roof    |
| 10. Office            | 20. Lobby            |



Site plan



Ground floor plan

**KING'S COLLEGE  
LIBRARY,  
TAUNTON,  
SOMERSET  
MITCHELL  
TAYLOR  
WORKSHOP**

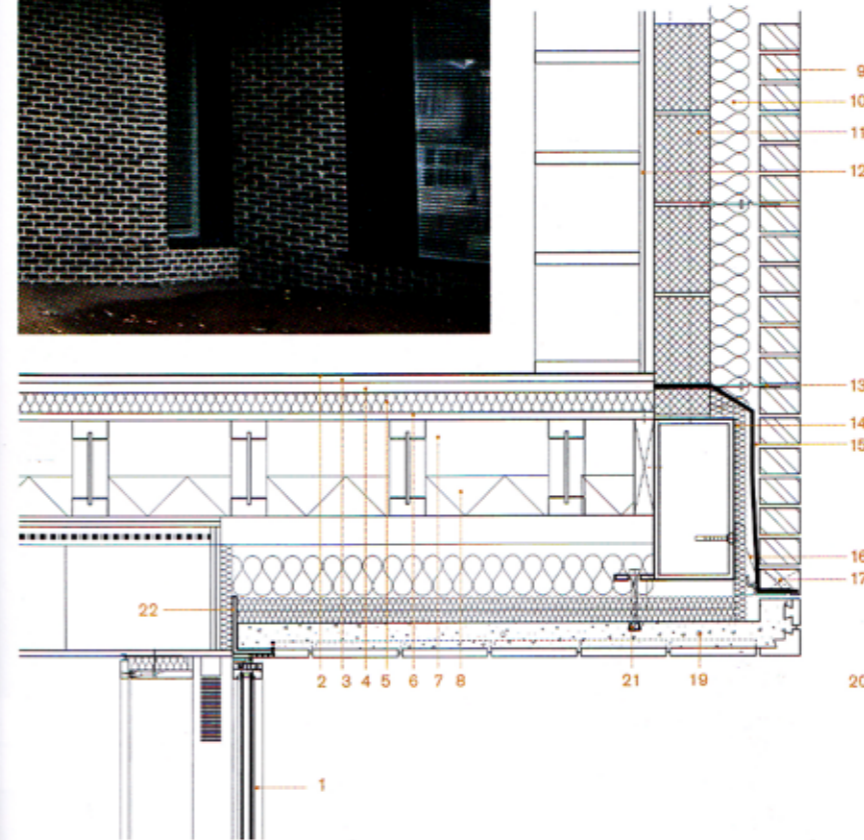


LUKE HICKCOMBE

- 1. ICT
- 2. Business studios
- 3. Office
- 4. WC
- 5. Library



SIMON GOULD

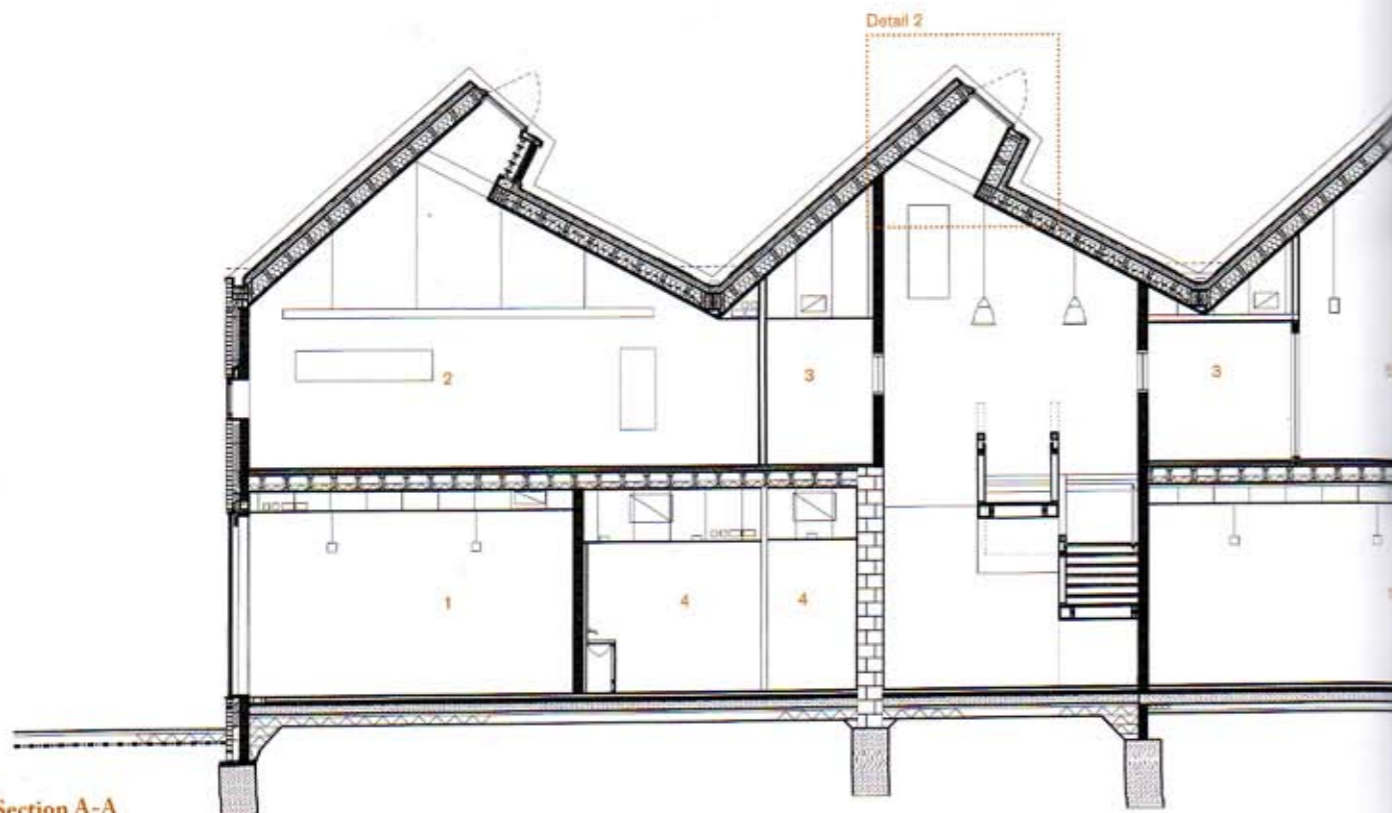


**Detail 1: Brick soffit**

- 1. Aluminium-framed glazing
- 2. Carpet/rubber floor finish
- 3. 18mm structural ply sheathing
- 4. 25mm sound-deadening board
- 5. 50mm battens
- 6. 18mm plywood
- 7. 240mm-deep masonite timber I-beam
- 8. Airborne sound insulation
- 9. Multi-stock and kinker brickwork
- 10. Partial fill cavity insulation
- 11. Blockwork
- 12. Library shelving
- 13. Wall ties
- 14. 400 x 200mm RHS
- 15. Cavity tray
- 16. Masonry support system
- 17. Perpend weephole
- 18. 100 x 100mm square metal plate at 450mm c/s welded to RHS
- 19. Stainless steel dowels
- 20. Pre-cast brick soffit
- 21. Continuous channel
- 22. L-shaped lintel

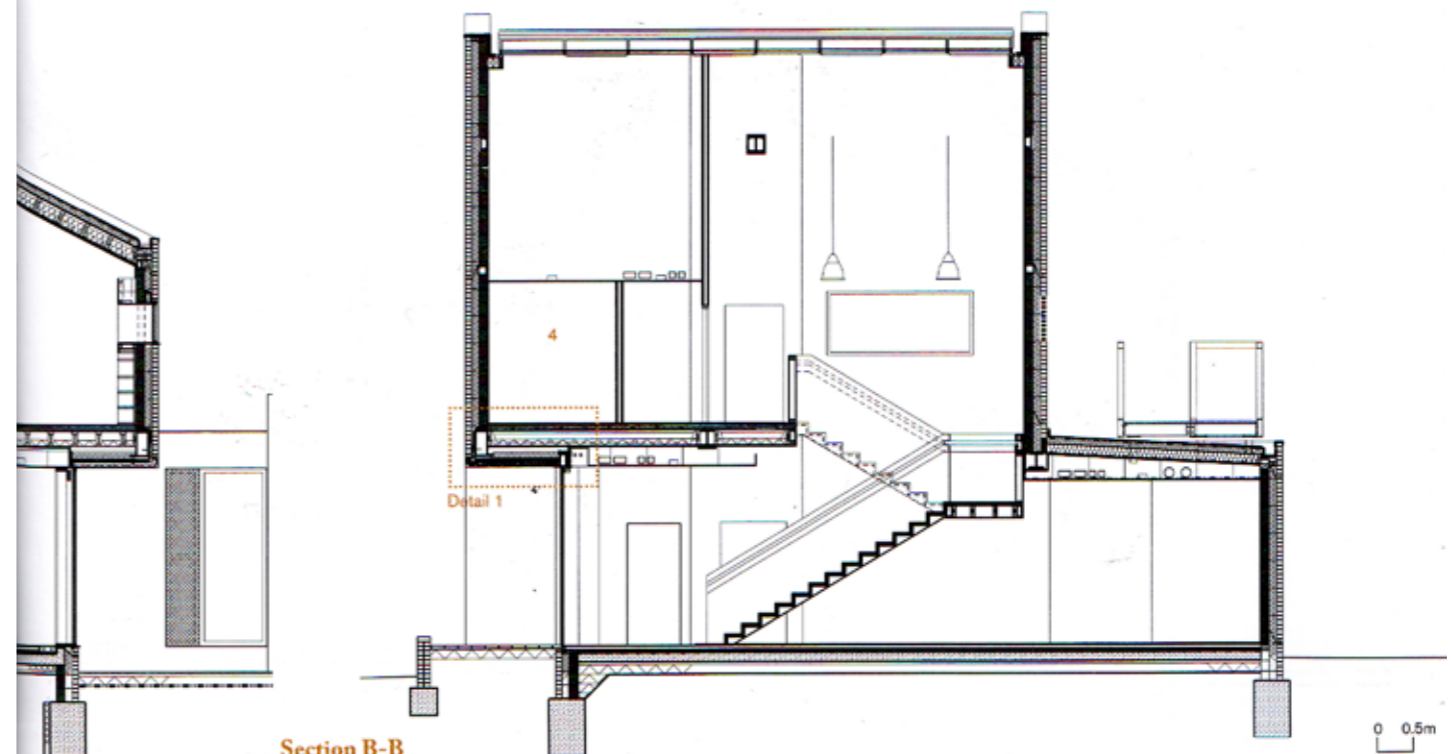
0 1m

Left Library looking east  
Right The library at first floor level



Section A-A

AJ SPECIFICATION 10.11



Section B-B

AJ SPECIFICATION 10.11

0 0.5m

# KING'S COLLEGE LIBRARY, TAUNTON, SOMERSET MITCHELL TAYLOR WORKSHOP

## Right Stair lobby

1. Vitral rooflight
2. Actuator on BSM system
3. 15mm plasterboard on vapour barrier
4. Timber rafter
5. Unventilated VM zinc standing seam roof
6. Breather membrane
7. 100mm Xtratherm FR/ALU
8. 12mm structural ply sheathing
9. 150mm insulation between rafters
10. Vapour barrier



## Detail 2: Rooflight

